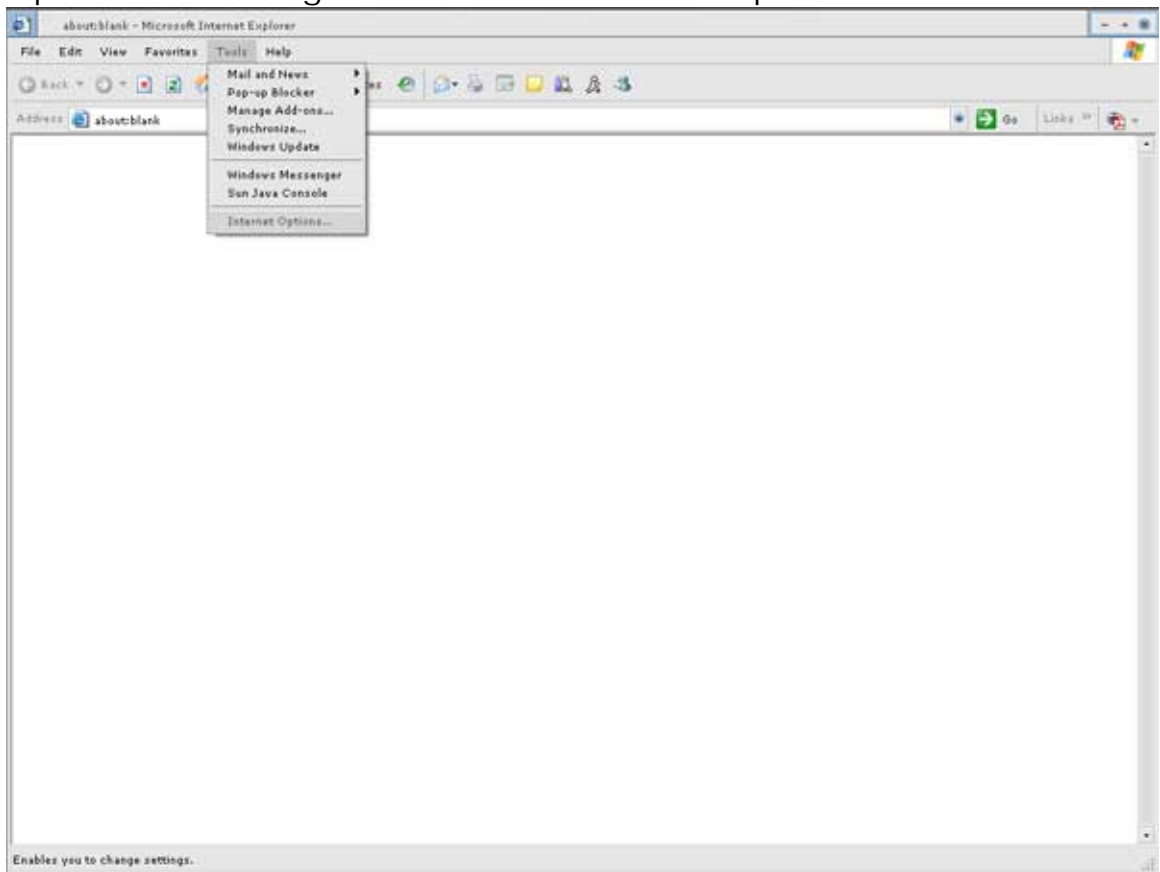
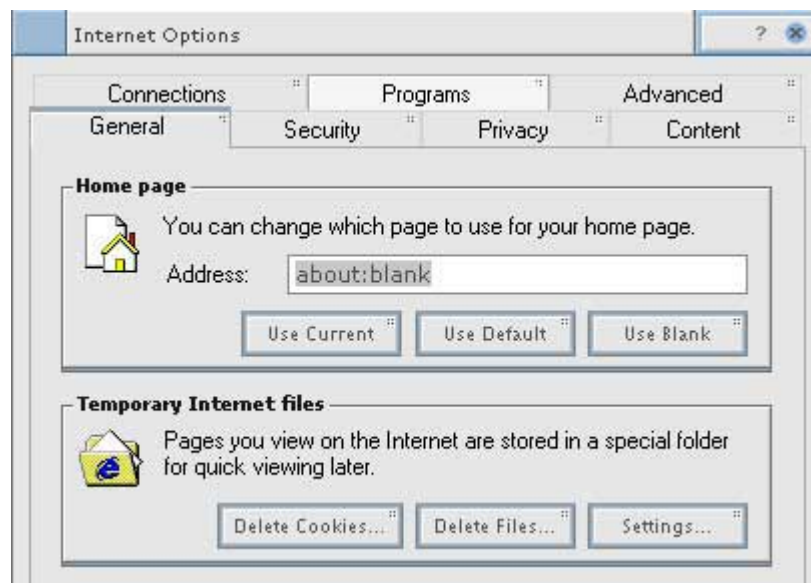


Configuring your email program in IE

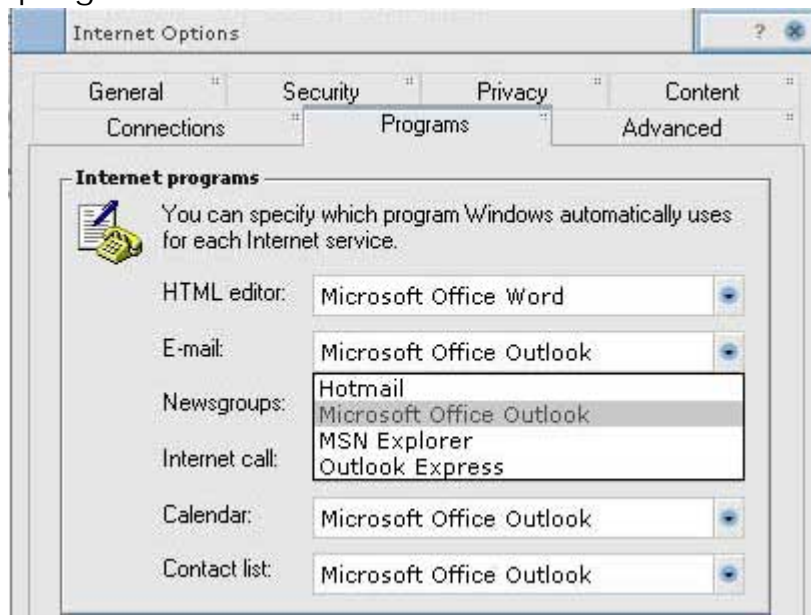
1. Open IE and navigate to Tools > Internet Options



2. From the main window that pop's up click on the Programs tab.



3. Click on the E-Mail dropdown box and make sure Microsoft Office Outlook and not Outlook Express is selected as your email program.



4. Once you've selected Microsoft Office Outlook, make sure to hit the 'OK' button and restart IE and you should have no more lock-up's.