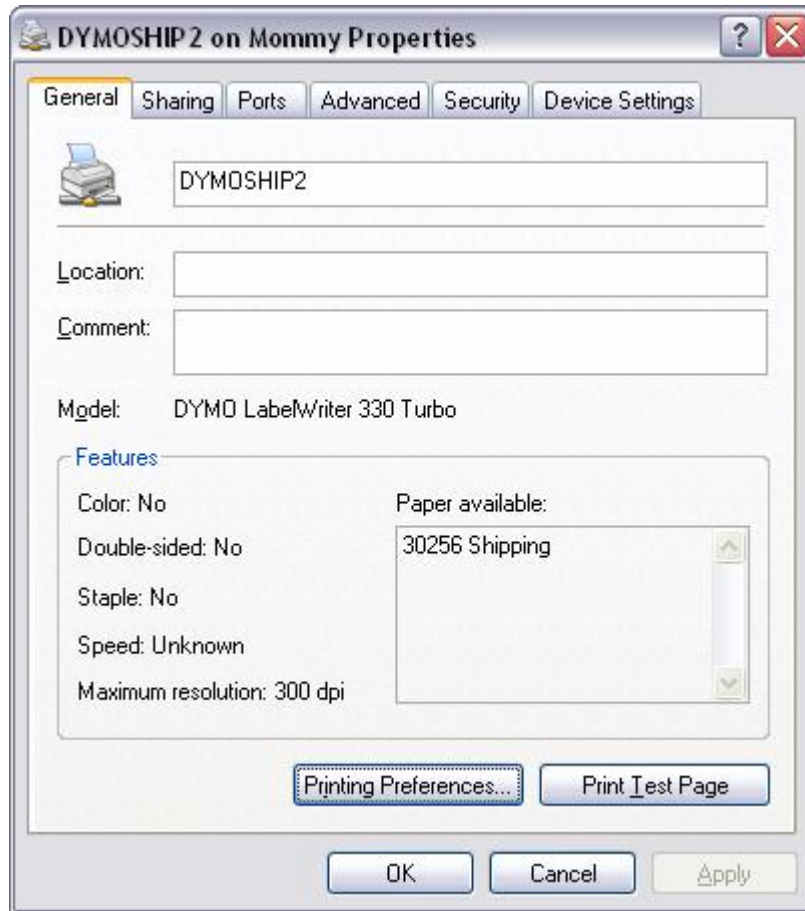
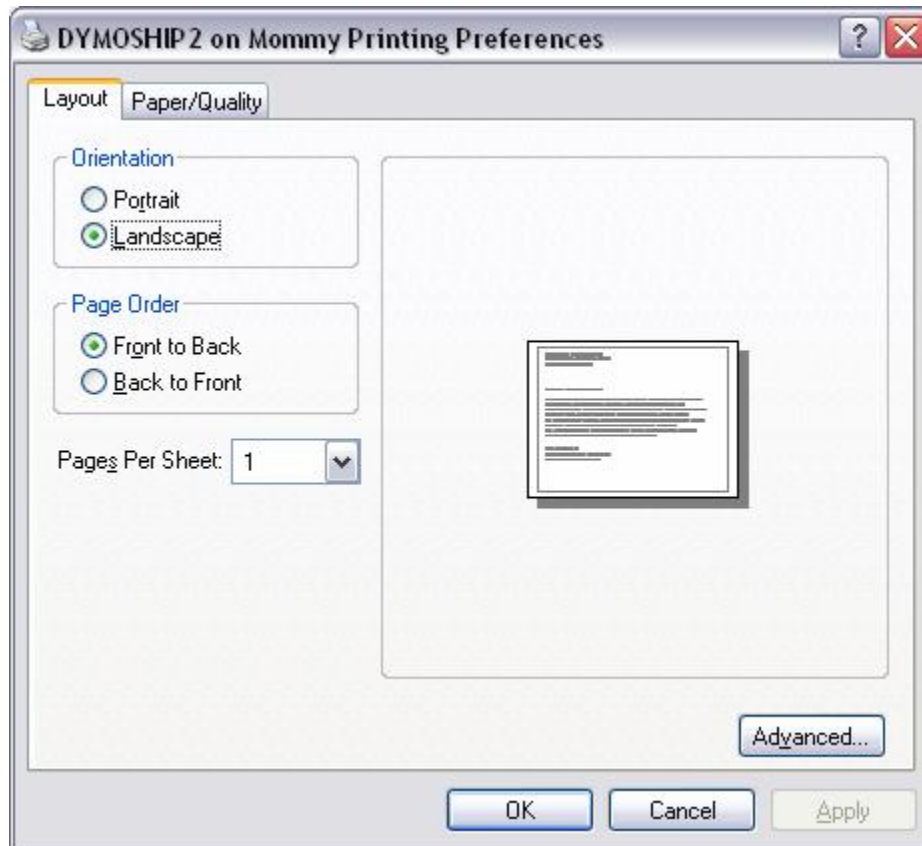


Dymo Configuration

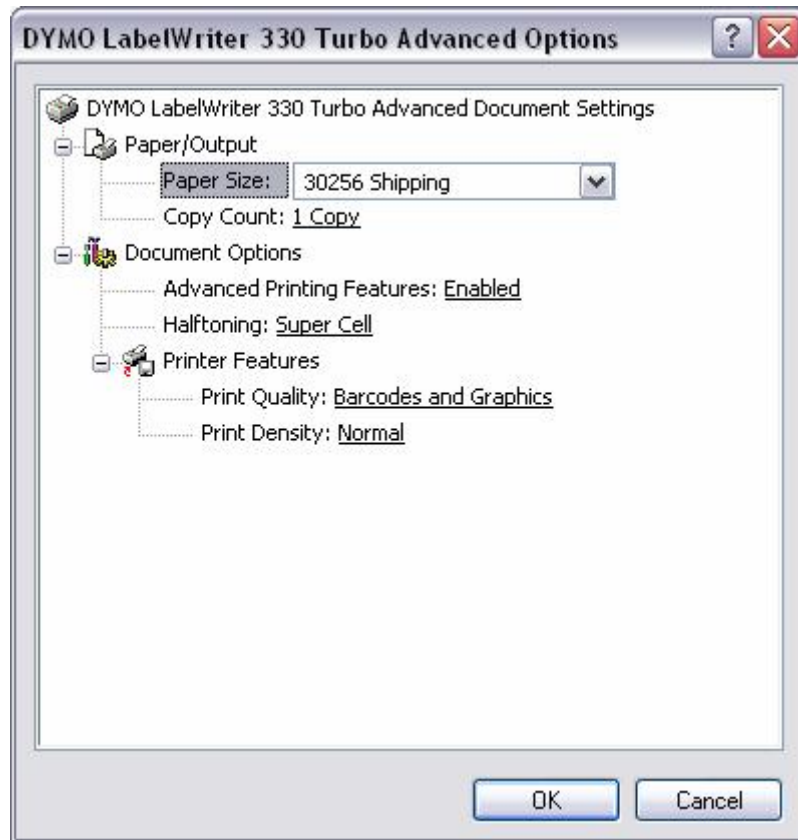
1. Please right click on Dymo Printer in Printer and Faxes
2. Then Click on Printing Preferences



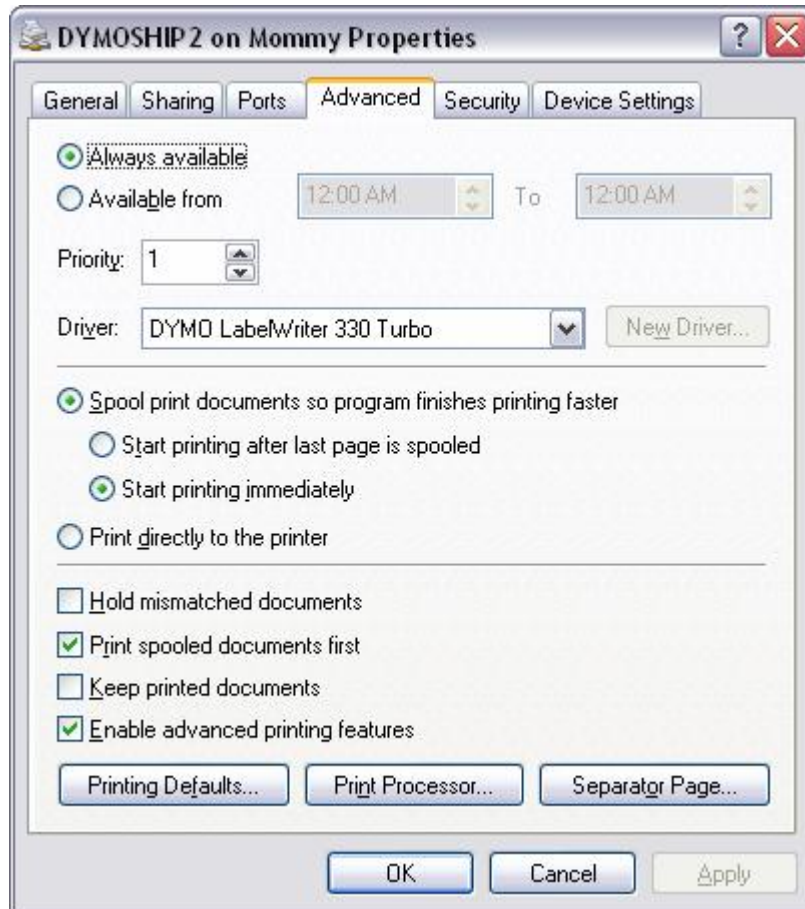
3. Then click on Advanced



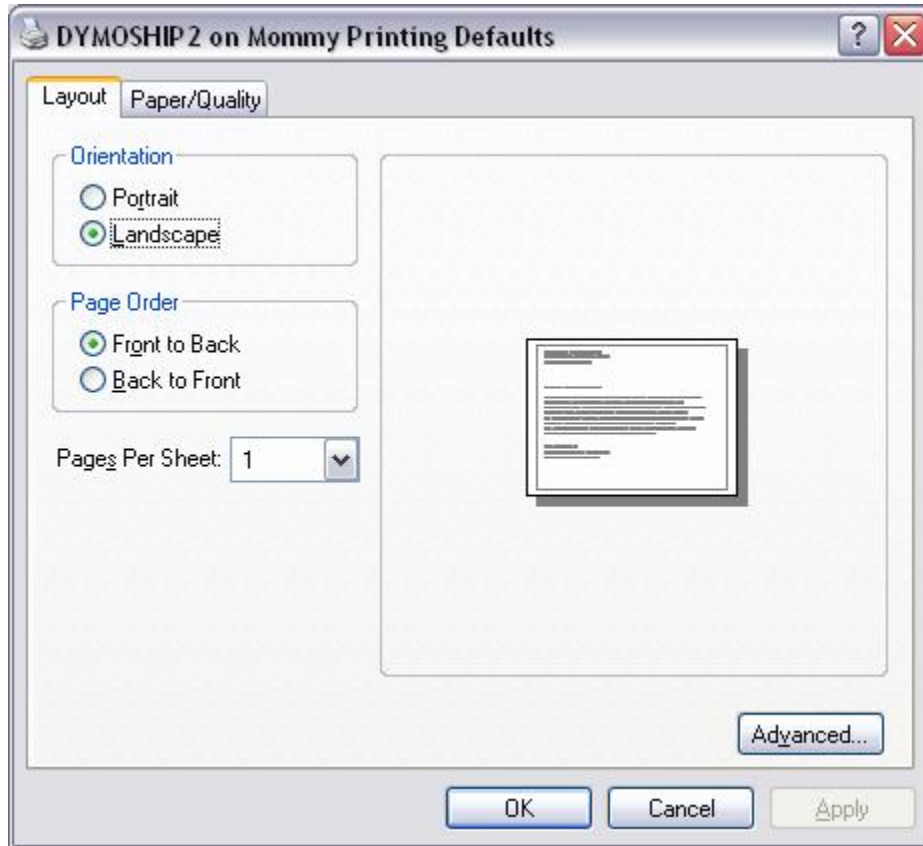
4. Set the settings as shown



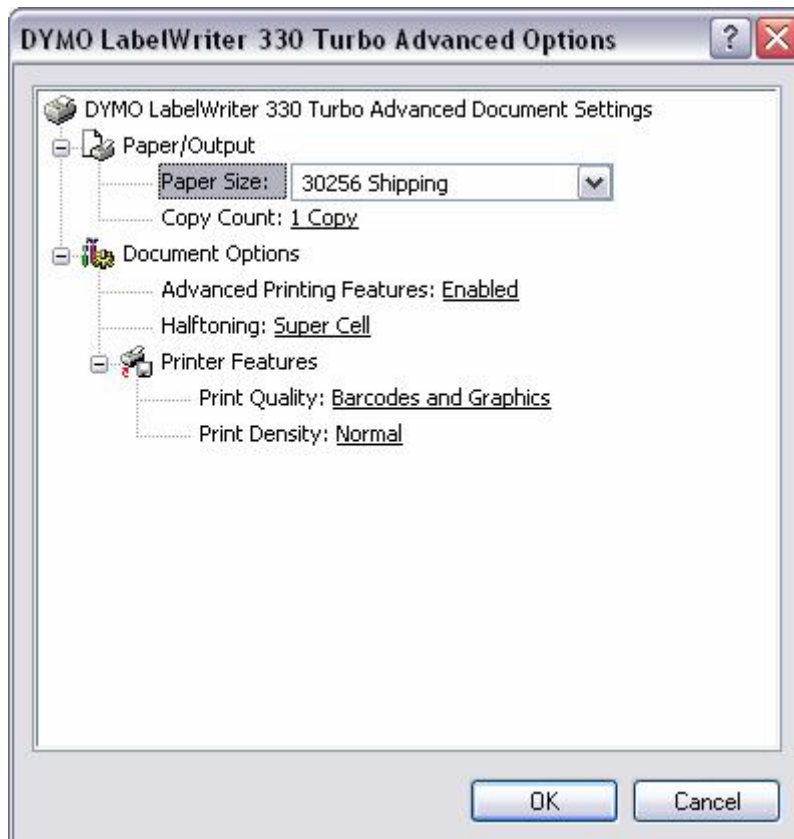
5. Click on the Advanced Tab
6. Then click on Printing Defaults



7. Click on Printing Defaults



8. Click on Advanced
9. Check the settings and Adjust if needs changing



10. Then click on Device Settings

